

Anti-mouse CD3 ϵ mIgG2a Antibody(145-2C11)

Product Information

Product Name	Anti-mouse CD3 ϵ mIgG2a Antibody(145-2C11)
Storage temp.	Store at 2-8°C short term (1-2 weeks).Store at \leq -20°C long term. Avoid repeated freeze-thaw.
Catalog# / Size	GM-87887MAB-1mg / 1 mg GM-87887MAB-5mg / 5 mg GM-87887MAB-25mg / 25 mg GM-87887MAB-50mg / 50 mg GM-87887MAB-100mg / 100 mg

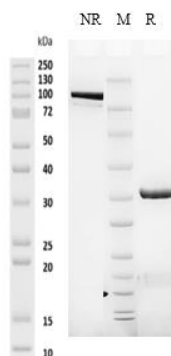
Antibody Information

Expression System	CHO
Aggregation	< 5% as determined by SEC-HPLC
Purity	> 95% as determined by SDS-PAGE
Endotoxin	< 1 EU/mg, determined by LAL gel clotting assay
Sterility	0.2 μ m Filtered
Target	CD3 ϵ
Clone	145-2C11
Other Names	CD3, CD3epsilon, T3e
Source/Isotype	Monoclonal mouse IgG2a, kappa
Application	/
Description	The CD3 ϵ gene is an important gene in human genome 11 and encodes a CD3 ϵ protein that is a key component of the T cell receptor (TCR) complex. CD3 complex plays an important role in T cell development, activation and signal transduction. The protein encoded by this gene is the CD3-epsilon polypeptide, which together with CD3-gamma, -delta and -zeta, and the T-cell receptor alpha/beta and gamma/delta heterodimers, forms the T-cell receptor-CD3 complex. This complex plays an important role in coupling antigen recognition to several intracellular signal-transduction pathways. The genes encoding the epsilon, gamma and delta polypeptides are located in the same cluster on chromosome 11. The epsilon polypeptide plays an essential role in T-cell development. Defects in this gene cause immunodeficiency. This gene has also been linked to a susceptibility to type I diabetes in women.
Formulation	Phosphate-buffered solution, pH 7.2.

Version:3.1

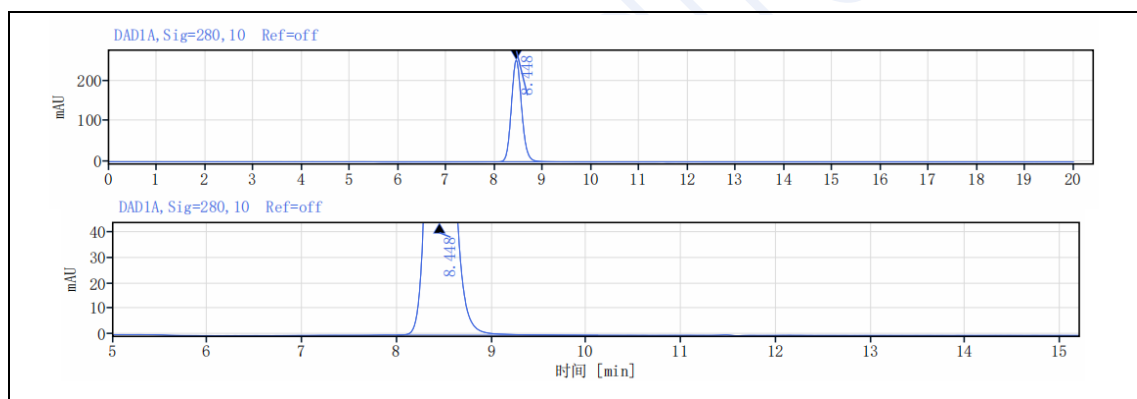
Data Examples

SDS-PAGE



On SDS-PAGE under reducing (R)/non-reducing(N-R) condition. The gel was stained overnight with Coomassie Blue. The purity of the protein is greater than 95%.

SEC-HPLC



The purity of this product is more than 95% verified by SEC-HPLC.